



Catalogue

2025



- ▶ CIRCUIT INTEGRITY: P-R
- ▶ EI FIRE RATING



Comprehensive fire protection
of distribution boxes



Comprehensive fire protection
of distribution boxes



KM FIRE

KM FIRE s.r.o. is a Czech fireproof distribution boxes manufacturer with many years of experience in fire safety. We manufacture free-standing distribution boxes, surface-mounted as well as in-wall boxes.

Our products meet all building engineering equipment and fire safety requirements in the area of distribution box fire resistance. Fireproof distribution boxes are generally divided into two categories depending on the type of the required fire safety.

Circuit integrity, P-R classified – NEW!

P-R- classified distribution boxes maintaining **circuit integrity under fire conditions** ensure operation and power supply of equipment necessary for securing the operation of systems that must remain functional even in fire, such as evacuation systems, fire warning systems, emergency lighting, etc.

EI, S_a/S₂₀₀ classified fire resistance

EI-rated distribution boxes prevent fire from spreading from the inside of the box to the protected escape route and to the surrounding of the building. An equally important feature is S_a/S₂₀₀ smoke tightness, which prevents both cold and hot smoke from spreading into the building's protected areas.

Production

Our production hall is situated in Nový Bydžov, near a D11 motorway exit between Hradec Králové and Prague.





Technical specifications of our boxes

- ▶ **Circuit integrity: P30-R, P60-R, P90-R**
- ▶ **Fire resistance: EI 30, EI 45, EI 60 a EI 90**
- ▶ Structure: DP1, integrity: A1
- ▶ Ingress protection rating: IP 54
- ▶ In compliance with ČSN EN 1634-1, ČSN EN 1634-3, ČSN 73 0895, ČSN 73 0810, ČSN 73 0848
- ▶ Multi-field version of the SR free-standing boxes available
- ▶ Surface finish: powder coating, usually RAL 7035 Light Grey, different shades available on request
- ▶ The boxes can be fitted with an instrument grid, electricity meter case or mounting plate

Reference

- ▶ České Budějovice Hospital
- ▶ Cheb Hospital
- ▶ Dukovany Power Plant
- ▶ Škoda Auto Mladá Boleslav
- ▶ Czech Social Security Administration data centre
- ▶ O2 Arena, Prague
- ▶ TPCA, Kolín
- ▶ Plzeň College Hospital
- ▶ Motol College Hospital
- ▶ Ostrava Hospital
- ▶ Brno Airport
- ▶ CTP, Trnava
- ▶ Stromovka blocks of flats
- ▶ Smíchov CITY blocks of flats
- ▶ Lipník nad Bečvou CTPark
- ▶ Argentinská hvězda office building
- ▶ Biocev, Vestec
- ▶ Hotel Opatov, Prague
- ▶ Kaufland, Plzeň
- ▶ Panattoni, Cheb



Certificates

We have collaborated with the PAVUS, a.s. fire safety testing centre for a long time and now we also work with AFIRE s.r.o. These testing centres test our products, which are then certified for the purpose of declaring that they meet the building engineering equipment and fire safety requirements



Fireproof box configurator

We have prepared a simple configurator for you to quickly put together your own fireproof box.

You can download your configuration immediately as a PDF file, find out about the price and place your order.

konfigurator.kmfire.cz



1 Základní nastavení
Hlavní konfigurace skříně a rozměrů

2 Výběh
Výběh druhů výprn a roln

Přístrojový rošt - 7 866,00 Kč

Komplet
 Pouze bočnice
 Pouze příprava

Přidat krycí desky
s výřezem **BEZ VÝŘEZU**

DOPLNIT ROŠT AUTOMATICKY

- BP2-FP-800/150-BL
- BP2-FP-800/100-BL
- BP2-FP-800/150-BL
- BP2-FP-800/200-BL

Montážní panel
Elektronická příprava
Prázdná skřín

Pokračovat

3 Ventilace
Umístění ventilace ve skřín

4 Prostupy
Prostupy v příslušném rozměru a umístění
Cena za konfiguraci

870
400

1900
2050
1900
2050

720
320

SR 2084-EI 60 DP1-S(a) / S(200)

ZMĚNIT TYP SKŘÍNĚ

Bočnice	BP2-MSW-20/SNAP	(t)
DIN síly	BP2-DNR26-800	(t)
Úchyty	BEL-1	(s)
Úchyty	BEL-12	(s)
Krycí desky	BP2-FP-800/200-BL	(z)
Krycí desky	BP2-FP-800/200-45	(z)
Krycí desky	BP2-FP-800/150-45	(z)
Barva	RAL 7035 - světlé šedí	
Kapacita skříně	455 modulů	
<small>Plí maximálním osazení DIN sílami</small>		

Contents

Circuit integrity P-R classified distribution boxes..... 9

F-SR-N P-R circuit integrity boxes to be installed on the floor next to a wall.....	10
Wall-mounted F-SP P-R circuit integrity boxes.....	15
SKM-P ventilation system for circuit integrity boxes.....	18
UKM-P cable sleeves for circuit integrity boxes.....	19

EI fire resistance preventing fire from spreading 21

Free-standing EI-rated SR boxes	22
Multi-field version.....	23
Surface-mounted EI-rated SP boxes	29
In-wall EI-rated SZ L frame with door.....	35
Installation procedure for SZ L – EI in-wall distribution boxes	36
Ventilation system for EI-rated boxes	41
Cable sleeves for EI-rated boxes	42



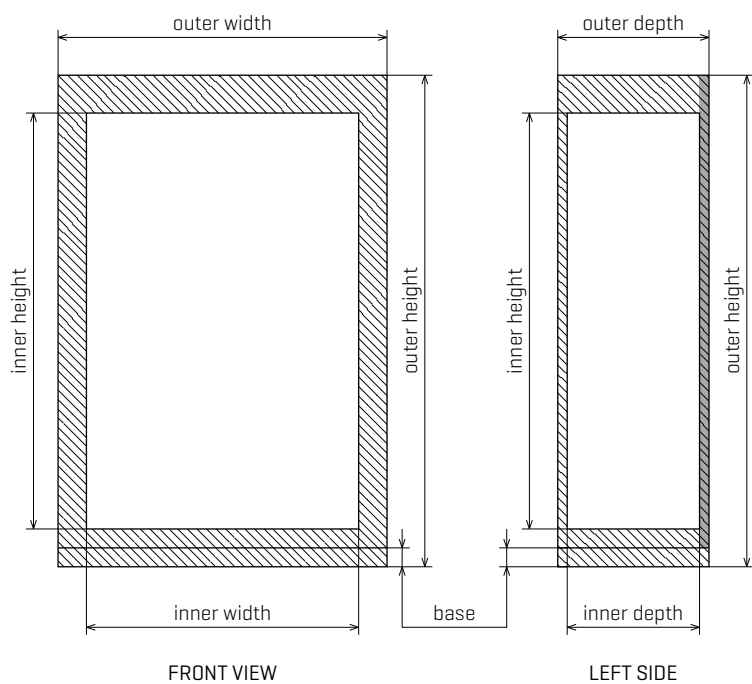
Circuit integrity P-R classified distribution boxes

- ▶ Boxes standing on the floor; surface-mounted boxes
- ▶ Circuit integrity: P30-R, P60-R, P90-R
- ▶ Can be fitted with certified SKM-P ventilation system
- ▶ Certified UKM-P cable sleeves
- ▶ Structure: DP1, IP 54



F-SR-NP-R circuit integrity boxes to be installed on the floor next to a wall

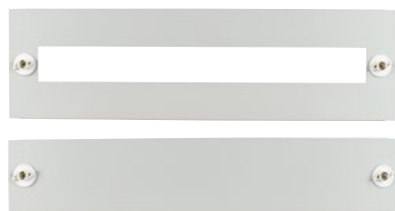
- ▶ Boxes standing on the floor, the back must be attached to the wall
- ▶ Circuit integrity: P30-R, P60-R, P90-R
- ▶ Structure: DP1, integrity: A1
- ▶ Ingress protection rating: IP 54
- ▶ Compliance with ČSN 73 0895
- ▶ The boxes can be fitted with certified SKM-P ventilation system
- ▶ Certified UKM-P cable sleeves
- ▶ Surface finish: powder coating, usually RAL 7035 Light Grey, different shades available on request
- ▶ 100mm base with removable back and front panels for easy forklift or pallet truck use
- ▶ Transport lugs for easier handling can be ordered
- ▶ The boxes can be fitted with an instrument grid or mounting plate



Accessories

The following internal structures are offered for F-SR-N boxes:

- ▶ Instrument grid, cover plates with or without cut-out
- ▶ Mounting plate



Cover plate with or without cut-out



Mounting plate

Instrument grid

F-SR-N P-R circuit integrity boxes to be installed on the floor next to a wall

F-SR-N - P30-R						
Type name	Outside dimensions [mm] height* × width × depth	Inside dimensions [mm] height × width × depth	Weight ** [kg]	PV *** [W]	Number of modules capacity	Product code
F-SR-N 2087 P30-R	2175 × 895 × 750	1900 × 720 × 620	495	285	455	201101
F-SR-N 2086 P30-R	2175 × 895 × 650	1900 × 720 × 520	451	250	455	201102
F-SR-N 2085 P30-R	2175 × 895 × 550	1900 × 720 × 420	407	215	455	201103
F-SR-N 2084 P30-R	2175 × 895 × 450	1900 × 720 × 320	363	180	455	201104
F-SR-N 2083 P30-R	2175 × 895 × 350	1900 × 720 × 220	319	140	455	201105
F-SR-N 2067 P30-R	2175 × 695 × 750	1900 × 520 × 620	407	195	312	201106
F-SR-N 2066 P30-R	2175 × 695 × 650	1900 × 520 × 520	363	175	312	201107
F-SR-N 2065 P30-R	2175 × 695 × 550	1900 × 520 × 420	319	155	312	201108
F-SR-N 2064 P30-R	2175 × 695 × 450	1900 × 520 × 320	275	130	312	201109
F-SR-N 2063 P30-R	2175 × 695 × 350	1900 × 520 × 220	231	100	312	201110
F-SR-N 1787 P30-R	1875 × 895 × 750	1600 × 720 × 620	462	270	455	201111
F-SR-N 1786 P30-R	1875 × 895 × 650	1600 × 720 × 520	418	235	455	201112
F-SR-N 1785 P30-R	1875 × 895 × 550	1600 × 720 × 420	374	200	455	201113
F-SR-N 1784 P30-R	1875 × 895 × 450	1600 × 720 × 320	330	165	455	201114
F-SR-N 1783 P30-R	1875 × 895 × 350	1600 × 720 × 220	286	125	455	201115
F-SR-N 1767 P30-R	1875 × 695 × 750	1600 × 520 × 620	374	180	264	201116
F-SR-N 1766 P30-R	1875 × 695 × 650	1600 × 520 × 520	330	160	264	201117
F-SR-N 1765 P30-R	1875 × 695 × 550	1600 × 520 × 420	286	140	264	201118
F-SR-N 1764 P30-R	1875 × 695 × 450	1600 × 520 × 320	242	115	264	201119
F-SR-N 1763 P30-R	1875 × 695 × 350	1600 × 520 × 220	198	85	264	201120
F-SR-N 1587 P30-R	1675 × 895 × 750	1400 × 720 × 620	440	258	315	201121
F-SR-N 1586 P30-R	1675 × 895 × 650	1400 × 720 × 520	396	223	315	201122
F-SR-N 1585 P30-R	1675 × 895 × 550	1400 × 720 × 420	352	188	315	201123
F-SR-N 1584 P30-R	1675 × 895 × 450	1400 × 720 × 320	308	153	315	201124
F-SR-N 1583 P30-R	1675 × 895 × 350	1400 × 720 × 220	264	113	315	201125
F-SR-N 1567 P30-R	1675 × 695 × 750	1400 × 520 × 620	352	168	216	201126
F-SR-N 1566 P30-R	1675 × 695 × 650	1400 × 520 × 520	308	148	216	201127
F-SR-N 1565 P30-R	1675 × 695 × 550	1400 × 520 × 420	264	128	216	201128
F-SR-N 1564 P30-R	1675 × 695 × 450	1400 × 520 × 320	220	103	216	201129
F-SR-N 1563 P30-R	1675 × 695 × 350	1400 × 520 × 220	176	75	216	201130

* Height including base: 100 mm ** Approximate weight *** Approximate figures, without ventilation
Atypical dimensions can be supplied on request.

F-SR-NP-R circuit integrity boxes to be installed on the floor next to a wall

F-SR-N – P60-R						
Type name	Outside dimensions [mm] height* × width × depth	Inside dimensions [mm] height × width × depth	Weight ** [kg]	PV *** [W]	Number of modules capacity	Product code
F-SR-N 2087 P60-R	2175 × 895 × 750	1900 × 720 × 620	510	271	455	201201
F-SR-N 2086 P60-R	2175 × 895 × 650	1900 × 720 × 520	465	238	455	201202
F-SR-N 2085 P60-R	2175 × 895 × 550	1900 × 720 × 420	419	204	455	201203
F-SR-N 2084 P60-R	2175 × 895 × 450	1900 × 720 × 320	374	171	455	201204
F-SR-N 2083 P60-R	2175 × 895 × 350	1900 × 720 × 220	329	133	455	201205
F-SR-N 2067 P60-R	2175 × 695 × 750	1900 × 520 × 620	419	185	312	201206
F-SR-N 2066 P60-R	2175 × 695 × 650	1900 × 520 × 520	374	166	312	201207
F-SR-N 2065 P60-R	2175 × 695 × 550	1900 × 520 × 420	329	147	312	201208
F-SR-N 2064 P60-R	2175 × 695 × 450	1900 × 520 × 320	283	124	312	201209
F-SR-N 2063 P60-R	2175 × 695 × 350	1900 × 520 × 220	238	95	312	201210
F-SR-N 1787 P60-R	1875 × 895 × 750	1600 × 720 × 620	476	257	455	201211
F-SR-N 1786 P60-R	1875 × 895 × 650	1600 × 720 × 520	431	223	455	201212
F-SR-N 1785 P60-R	1875 × 895 × 550	1600 × 720 × 420	385	190	455	201213
F-SR-N 1784 P60-R	1875 × 895 × 450	1600 × 720 × 320	340	157	455	201214
F-SR-N 1783 P60-R	1875 × 895 × 350	1600 × 720 × 220	295	119	455	201215
F-SR-N 1767 P60-R	1875 × 695 × 750	1600 × 520 × 620	385	171	264	201216
F-SR-N 1766 P60-R	1875 × 695 × 650	1600 × 520 × 520	340	152	264	201217
F-SR-N 1765 P60-R	1875 × 695 × 550	1600 × 520 × 420	295	133	264	201218
F-SR-N 1764 P60-R	1875 × 695 × 450	1600 × 520 × 320	249	109	264	201219
F-SR-N 1763 P60-R	1875 × 695 × 350	1600 × 520 × 220	204	81	264	201220
F-SR-N 1587 P60-R	1675 × 895 × 750	1400 × 720 × 620	453	245	315	201221
F-SR-N 1586 P60-R	1675 × 895 × 650	1400 × 720 × 520	408	212	315	201222
F-SR-N 1585 P60-R	1675 × 895 × 550	1400 × 720 × 420	363	179	315	201223
F-SR-N 1584 P60-R	1675 × 895 × 450	1400 × 720 × 320	317	145	315	201224
F-SR-N 1583 P60-R	1675 × 895 × 350	1400 × 720 × 220	272	107	315	201225
F-SR-N 1567 P60-R	1675 × 695 × 750	1400 × 520 × 620	363	160	216	201226
F-SR-N 1566 P60-R	1675 × 695 × 650	1400 × 520 × 520	317	141	216	201227
F-SR-N 1565 P60-R	1675 × 695 × 550	1400 × 520 × 420	272	122	216	201228
F-SR-N 1564 P60-R	1675 × 695 × 450	1400 × 520 × 320	227	98	216	201229
F-SR-N 1563 P60-R	1675 × 695 × 350	1400 × 520 × 220	181	71	216	201230

* Height including base: 100 mm ** Approximate weight *** Approximate figures, without ventilation
Atypical dimensions can be supplied on request.

F-SR-N P-R circuit integrity boxes to be installed on the floor next to a wall

F-SR-N - P90-R						
Type name	Outside dimensions [mm] height* × width × depth	Inside dimensions [mm] height × width × depth	Weight ** [kg]	PV *** [W]	Number of modules capacity	Product code
F-SR-N 2087 P90-R	2175 × 895 × 750	1900 × 720 × 620	525	262	455	201301
F-SR-N 2086 P90-R	2175 × 895 × 650	1900 × 720 × 520	479	230	455	201302
F-SR-N 2085 P90-R	2175 × 895 × 550	1900 × 720 × 420	432	198	455	201303
F-SR-N 2084 P90-R	2175 × 895 × 450	1900 × 720 × 320	385	166	455	201304
F-SR-N 2083 P90-R	2175 × 895 × 350	1900 × 720 × 220	339	129	455	201305
F-SR-N 2067 P90-R	2175 × 695 × 750	1900 × 520 × 620	432	179	312	201306
F-SR-N 2066 P90-R	2175 × 695 × 650	1900 × 520 × 520	385	161	312	201307
F-SR-N 2065 P90-R	2175 × 695 × 550	1900 × 520 × 420	339	143	312	201308
F-SR-N 2064 P90-R	2175 × 695 × 450	1900 × 520 × 320	291	120	312	201309
F-SR-N 2063 P90-R	2175 × 695 × 350	1900 × 520 × 220	245	92	312	201310
F-SR-N 1787 P90-R	1875 × 895 × 750	1600 × 720 × 620	490	248	455	201311
F-SR-N 1786 P90-R	1875 × 895 × 650	1600 × 720 × 520	444	216	455	201312
F-SR-N 1785 P90-R	1875 × 895 × 550	1600 × 720 × 420	397	184	455	201313
F-SR-N 1784 P90-R	1875 × 895 × 450	1600 × 720 × 320	350	152	455	201314
F-SR-N 1783 P90-R	1875 × 895 × 350	1600 × 720 × 220	304	115	455	201315
F-SR-N 1767 P90-R	1875 × 695 × 750	1600 × 520 × 620	397	166	264	201316
F-SR-N 1766 P90-R	1875 × 695 × 650	1600 × 520 × 520	350	147	264	201317
F-SR-N 1765 P90-R	1875 × 695 × 550	1600 × 520 × 420	304	129	264	201318
F-SR-N 1764 P90-R	1875 × 695 × 450	1600 × 520 × 320	256	106	264	201319
F-SR-N 1763 P90-R	1875 × 695 × 350	1600 × 520 × 220	210	78	264	201320
F-SR-N 1587 P90-R	1675 × 895 × 750	1400 × 720 × 620	467	237	315	201321
F-SR-N 1586 P90-R	1675 × 895 × 650	1400 × 720 × 520	420	205	315	201322
F-SR-N 1585 P90-R	1675 × 895 × 550	1400 × 720 × 420	374	173	315	201323
F-SR-N 1584 P90-R	1675 × 895 × 450	1400 × 720 × 320	327	141	315	201324
F-SR-N 1583 P90-R	1675 × 895 × 350	1400 × 720 × 220	280	104	315	201325
F-SR-N 1567 P90-R	1675 × 695 × 750	1400 × 520 × 620	374	155	216	201326
F-SR-N 1566 P90-R	1675 × 695 × 650	1400 × 520 × 520	327	136	216	201327
F-SR-N 1565 P90-R	1675 × 695 × 550	1400 × 520 × 420	280	118	216	201328
F-SR-N 1564 P90-R	1675 × 695 × 450	1400 × 520 × 320	234	95	216	201329
F-SR-N 1563 P90-R	1675 × 695 × 350	1400 × 520 × 220	186	69	216	201330

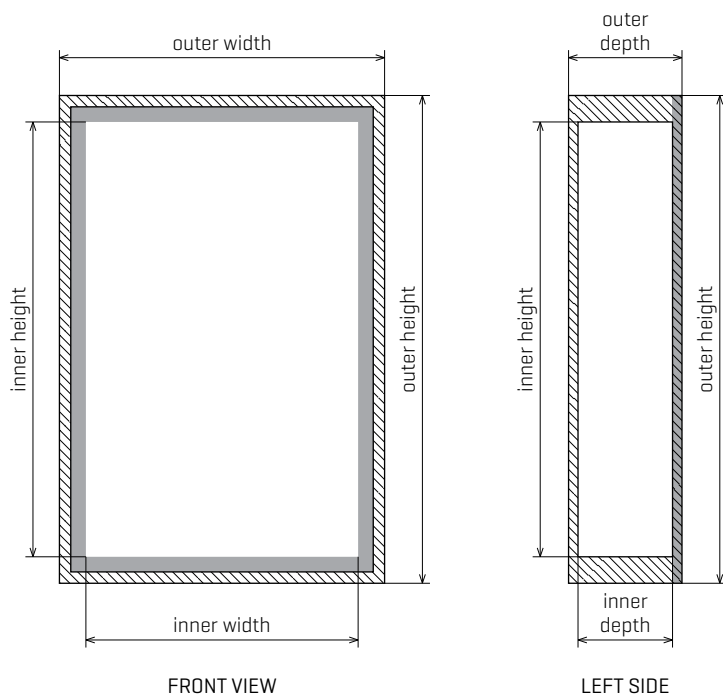
* Height including base: 100 mm ** Approximate weight *** Approximate figures, without ventilation
Atypical dimensions can be supplied on request.

F-SR-N P-R circuit integrity boxes to be installed on the floor next to a wall

Internal structure accessories for F-SR-N			
Type name	Product code		
	Instrument grid	Cover plates	Mounting plate
F-SR-N 2087 P-R	211101	211201	211301
F-SR-N 2086 P-R	211102	211202	211302
F-SR-N 2085 P-R	211103	211203	211303
F-SR-N 2084 P-R	211104	211204	211304
F-SR-N 2083 P-R	211105	211205	211305
F-SR-N 2067 P-R	211106	211206	211306
F-SR-N 2066 P-R	211107	211207	211307
F-SR-N 2065 P-R	211108	211208	211308
F-SR-N 2064 P-R	211109	211209	211309
F-SR-N 2063 P-R	211110	211210	211310
F-SR-N 1787 P-R	211111	211211	211311
F-SR-N 1786 P-R	211112	211212	211312
F-SR-N 1785 P-R	211113	211213	211313
F-SR-N 1784 P-R	211114	211214	211314
F-SR-N 1783 P-R	211115	211215	211315
F-SR-N 1767 P-R	211116	211216	211316
F-SR-N 1766 P-R	211117	211217	211317
F-SR-N 1765 P-R	211118	211218	211318
F-SR-N 1764 P-R	211119	211219	211319
F-SR-N 1763 P-R	211120	211220	211320
F-SR-N 1587 P-R	211121	211221	211321
F-SR-N 1586 P-R	211122	211222	211322
F-SR-N 1585 P-R	211123	211223	211323
F-SR-N 1584 P-R	211124	211224	211324
F-SR-N 1583 P-R	211125	211225	211325
F-SR-N 1567 P-R	211126	211226	211326
F-SR-N 1566 P-R	211127	211227	211327
F-SR-N 1565 P-R	211128	211228	211328
F-SR-N 1564 P-R	211129	211229	211329
F-SR-N 1563 P-R	211130	211230	211330

Wall-mounted F-SP P-R circuit integrity boxes

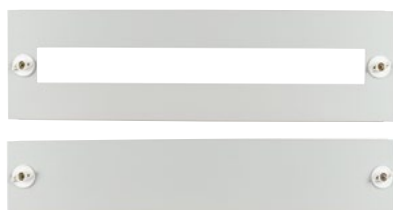
- ▶ Wall-mounted boxes
- ▶ Circuit integrity: P30-R
- ▶ Structure: DP1, integrity: A1
- ▶ Ingress protection rating: IP 54
- ▶ Compliance with ČSN 73 0895
- ▶ The boxes can be fitted with certified SKM-P ventilation system
- ▶ Certified UKM-P cable sleeves
- ▶ Surface finish: powder coating, usually RAL 7035 Light Grey, different shades available on request
- ▶ The boxes can be fitted with an instrument grid or mounting plate



Accessories

The following internal structures are offered for F-SP boxes:

- ▶ Instrument grid, cover plates with or without cut-out
- ▶ Mounting plate



Cover plate with or without cut-out



Mounting plate

Wall-mounted F-SP P-R circuit integrity boxes

F-SP – P30-R						
Type name	Outside dimensions [mm] height × width × depth	Inside dimensions [mm] height × width × depth	Weight * [kg]	PV ** [W]	Number of modules capacity	Product code
F-SP 1694 P30-R	1635 × 910 × 450	1450 × 720 × 330	317	158	315	202101
F-SP 1693 P30-R	1635 × 910 × 350	1450 × 720 × 230	281	128	315	202102
F-SP 1674 P30-R	1635 × 710 × 450	1450 × 520 × 320	256	113	216	202103
F-SP 1673 P30-R	1635 × 710 × 350	1450 × 520 × 220	220	83	216	202104
F-SP 1394 P30-R	1335 × 910 × 450	1150 × 720 × 330	287	128	245	202105
F-SP 1393 P30-R	1335 × 910 × 350	1150 × 720 × 230	250	98	245	202106
F-SP 1374 P30-R	1335 × 710 × 450	1150 × 520 × 330	226	90	168	202107
F-SP 1373 P30-R	1335 × 710 × 350	1150 × 520 × 230	189	65	168	202108
F-SP 1194 P30-R	1135 × 910 × 450	950 × 720 × 330	262	87	210	202109
F-SP 1193 P30-R	1135 × 910 × 350	950 × 720 × 230	226	75	210	202110
F-SP 1174 P30-R	1135 × 710 × 450	950 × 520 × 330	201	67	144	202111
F-SP 1173 P30-R	1135 × 710 × 350	950 × 520 × 230	165	55	144	202112
F-SP 0894 P30-R	835 × 910 × 450	650 × 720 × 330	220	68	140	202113
F-SP 0893 P30-R	835 × 910 × 350	650 × 720 × 230	183	60	140	202114
F-SP 0874 P30-R	835 × 710 × 450	650 × 520 × 330	153	53	96	202115
F-SP 0873 P30-R	835 × 710 × 350	650 × 520 × 230	122	45	96	202116

* Approximate weight ** Approximate figures, without ventilation
Atypical dimensions can be supplied on request.



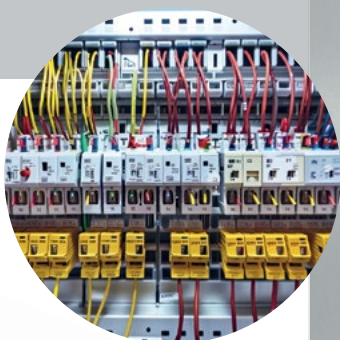
Wall-mounted F-SP P-R circuit integrity boxes

Internal structure accessories for F-SP			
Type name	Product code		
	Instrument grid	Cover plates	Mounting plate
F-SP 1694 P-R	212101	212201	212301
F-SP 1693 P-R	212102	212202	212302
F-SP 1674 P-R	212103	212203	212303
F-SP 1673 P-R	212104	212204	212304
F-SP 1394 P-R	212105	212205	212305
F-SP 1393 P-R	212106	212206	212306
F-SP 1374 P-R	212107	212207	212307
F-SP 1373 P-R	212108	212208	212308
F-SP 1194 P-R	212109	212209	212309
F-SP 1193 P-R	212110	212210	212310
F-SP 1174 P-R	212111	212211	212311
F-SP 1173 P-R	212112	212212	212312
F-SP 0894 P-R	212113	212213	212313
F-SP 0893 P-R	212114	212214	212314
F-SP 0874 P-R	212115	212215	212315
F-SP 0873 P-R	212116	212216	212316

SKM-P ventilation system for circuit integrity boxes

The SKM-P ventilation system is specially designed for the ventilation of circuit integrity boxes. The SKM-P ensures sufficient ventilation of the inside of the box and protects the inside against the impact of fire and hot air from the first second of fire to the maximum degree possible.

A ventilator can be installed behind the ventilation system for more efficient heat conduction



SKM-P ventilation system for circuit integrity P-R boxes

Fire resistance code	Product code
SKM- P30-R	205301
SKM- P60-R	205302
SKM- P90-R	205303

Ventilators				
Name	Power supply	Installation depth [mm]	Heat conduction* [W]	Product code
VT-105	230V [AC]	90	130	205201
VT-230	230V [AC]	107	300	205202
VT-550	230V [AC]	120	730	205203
VT-105-DC	24V [DC]	90	80	205204
VT-230-DC	24V [DC]	107	150	205205

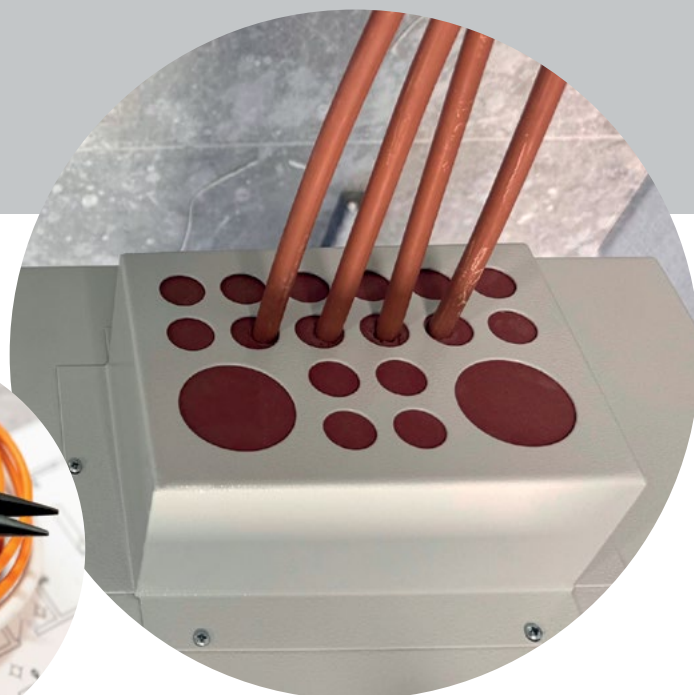
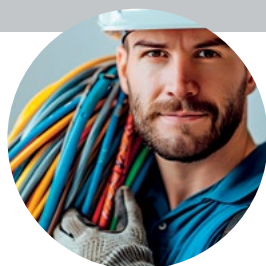
* Approximate figures

UKM-P cable sleeves for circuit integrity boxes

The UKM-P cable sleeves for circuit integrity boxes are specially designed for this type of boxes so as to prevent fire and heat from spreading into the inside of the box, including heat transfer through the cables as such. The cable sleeves are usually placed on the ceiling or floor of the box.

Cable installation is very easy. The cables are inserted into the sleeves, Then the top of the sleeve and the cables are treated with fireproof coating. After the coating has dried, strong and flexible sealing of the cables is ensured, with required fire resistance. No additional putty or packing is needed to seal the sleeve.

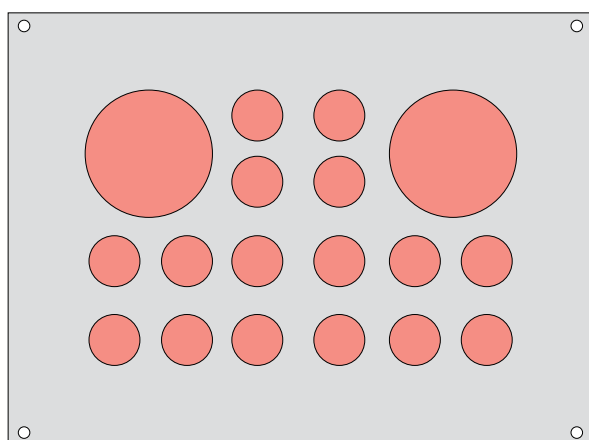
- ▶ Sleeves can be installed in box ceiling or bottom.
- ▶ Available versions: UKM-P-1 and UKM-P-2
- ▶ Multiple sleeve blocks can be fitted next to each other.
- ▶ Fast pass-through cable installation



Two versions available

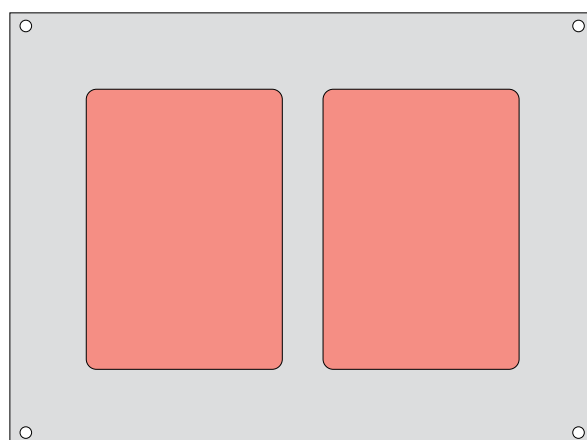
UKM-P-1

- ▶ 2 holes \varnothing 50 mm, 16 holes \varnothing 22 mm



UKM-P-2

- ▶ 2 holes [77 × 110 mm]



UKM-P cable sleeves – product codes

UKM-P-1	206101
UKM-P-2	206102



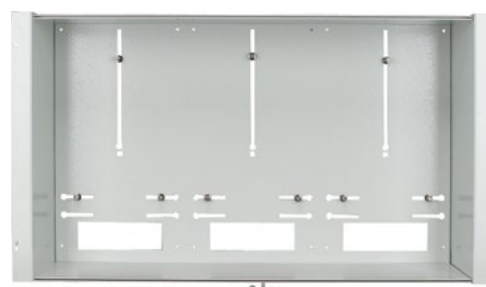
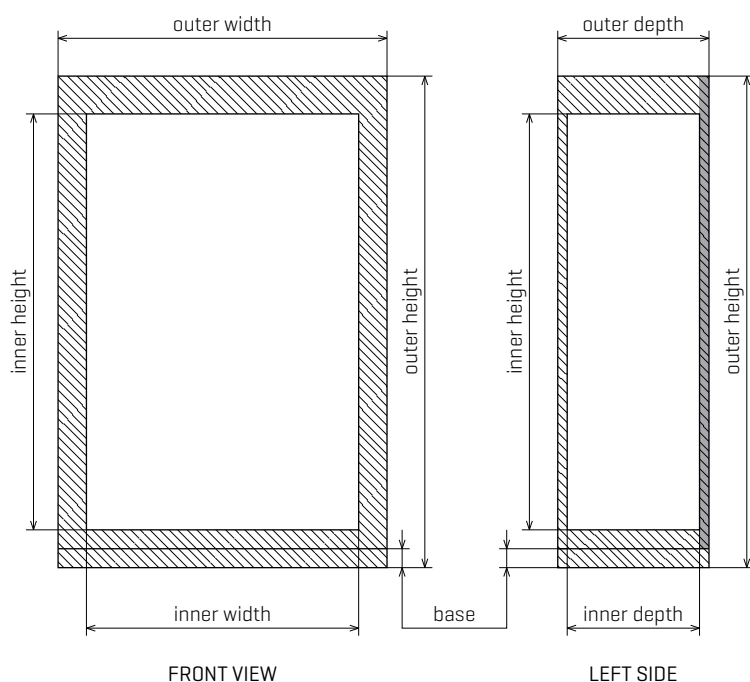
EI fire resistance preventing fire from spreading

- ▶ Boxes standing on the floor; surface-mounted boxes and in-wall frames with door
- ▶ Fire resistance: EI 30, EI 45, EI 60, EI 90
- ▶ Smoke-tight design: S_a/S_{200}
- ▶ Certified UKM and TKM cable sleeves
- ▶ Can be fitted with certified SKM ventilation system
- ▶ Version DP1, IP 54



Free-standing EI-rated SR boxes

- ▶ Fire resistance: EI 30, EI 45, EI 60 a EI 90
- ▶ Smoke-tight design: S_a/S_{200}
- ▶ Structure: DP1, integrity: A1
- ▶ Ingress protection rating: IP 54
- ▶ The boxes can be fitted with a ventilation system
- ▶ Certified UKM and TKM cable sleeves
- ▶ Tested in compliance with ČSN EN 1634-1, ČSN EN 1634-3
- ▶ Multi-field version of the SR free-standing boxes available
- ▶ Surface finish: powder coating, usually RAL 7035 Light Grey, different shades available on request
- ▶ The boxes can be fitted with an instrument grid, electricity meter case or mounting plate
- ▶ Atypical dimensions can be supplied after consultation.
- ▶ Supplied with a 50 mm base as a standard; 100 mm or 200 mm base can be supplied on request



Electricity metre case

Accessories

The following accessories are available for free-standing boxes:

- ▶ Instrument grid + cover plates with or without cut-out
- ▶ Mounting plate
- ▶ Electricity metre installation elements (electricity metre case, electricity metre plate, DIN rails with cover plate or without cut-out)
- ▶ Ventilation system



Cover plate with or without cut-out



Mounting plate



Electricity metre plate



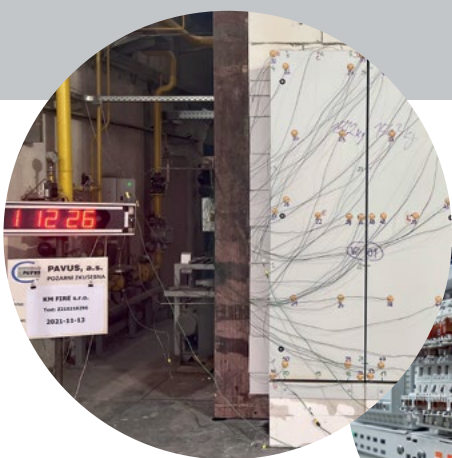
Instrument grid

Free-standing EI-rated SR boxes

Multi-field version

This is a version of free-standing SR boxes that can be connected in a compact field, with all the fire resistance features retained.

- ▶ Fire resistance: EI 30, EI 45, EI 60
- ▶ Design: DP1-S₀/S₂₀₀
- ▶ Ingress protection rating: IP 54
- ▶ The boxes are bolted together into a unified whole on the building site, with all the fire resistance features retained.
- ▶ The joint side panels of the boxes are open, so it is possible to put cables or copper strips through individual fields.
- ▶ This unique connection system is certified by PAVUS, a.s.



Free-standing EI-rated SR boxes

SR - EI 30 DP1-S _a /S ₂₀₀ - free-standing box IP 54						
Type name	Outside dimensions [mm] height* × width × depth	Inside dimensions [mm] height × width × depth	Weight ** [kg]	PV *** [W]	Number of modules capacity	Product code
SR 20126-EI 30	2050 × 1270 × 600	1900 × 1120 × 520	284	281	741	131101
SR 20125-EI 30	2050 × 1270 × 500	1900 × 1120 × 420	262	257	741	131102
SR 20124-EI 30	2050 × 1270 × 400	1900 × 1120 × 320	239	232	741	131103
SR 20106-EI 30	2050 × 1070 × 600	1900 × 920 × 520	356	301	598	131104
SR 20105-EI 30	2050 × 1070 × 500	1900 × 920 × 420	239	276	598	131105
▶ SR 20104-EI 30	2050 × 1070 × 400	1900 × 920 × 320	217	254	598	131106
SR 2086-EI 30	2050 × 870 × 600	1900 × 720 × 520	231	231	455	131107
SR 2085-EI 30	2050 × 870 × 500	1900 × 720 × 420	207	213	455	131108
▶ SR 2084-EI 30	2050 × 870 × 400	1900 × 720 × 320	192	186	455	131109
SR 2083-EI 30	2050 × 870 × 300	1900 × 720 × 220	176	170	455	131110
SR 2066-EI 30	2050 × 670 × 600	1900 × 520 × 520	186	181	312	131111
SR 2065-EI 30	2050 × 670 × 500	1900 × 520 × 420	171	160	312	131112
SR 2064-EI 30	2050 × 670 × 400	1900 × 520 × 320	157	140	312	131113
SR 2063-EI 30	2050 × 670 × 300	1900 × 520 × 220	141	125	312	131114
SR 17125-EI 30	1750 × 1270 × 500	1600 × 1120 × 420	209	210	627	131115
SR 17124-EI 30	1750 × 1270 × 400	1600 × 1120 × 320	198	197	627	131116
SR 17105-EI 30	1750 × 1070 × 500	1600 × 920 × 420	185	206	506	131117
SR 17104-EI 30	1750 × 1070 × 400	1600 × 920 × 320	174	193	506	131118
SR 1785-EI 30	1750 × 870 × 500	1600 × 720 × 420	177	172	385	131119
SR 1784-EI 30	1750 × 870 × 400	1600 × 720 × 320	167	158	385	131120
▶ SR 1765-EI 30	1750 × 670 × 500	1600 × 520 × 420	138	134	264	131121
SR 1764-EI 30	1750 × 670 × 400	1600 × 520 × 320	130	120	264	131122
SR 15124-EI 30	1550 × 1270 × 300	1400 × 1120 × 320	167	167	513	131123
SR 15104-EI 30	1550 × 1070 × 400	1400 × 920 × 320	159	164	414	131124
SR 1584-EI 30	1550 × 870 × 400	1400 × 720 × 320	125	135	315	131125
SR 1564-EI 30	1550 × 670 × 400	1400 × 520 × 320	116	106	216	131126

* Box height + 50 mm base ** Approximate figures *** Approximate figures, without ventilation
Atypical dimensions can be supplied on request.

▶ The item is usually in stock.

Free-standing EI-rated SR boxes

SR - EI 45 DP1-S _a /S ₂₀₀ – free-standing box IP 54						
Type name	Outside dimensions [mm] height* × width × depth	Inside dimensions [mm] height × width × depth	Weight ** [kg]	PV *** [W]	Number of modules capacity	Product code
SR 20126-EI 45	2050 × 1270 × 600	1900 × 1120 × 520	296	249	741	131201
SR 20125-EI 45	2050 × 1270 × 500	1900 × 1120 × 420	274	228	741	131202
SR 20124-EI 45	2050 × 1270 × 400	1900 × 1120 × 320	251	206	741	131203
SR 20106-EI 45	2050 × 1070 × 600	1900 × 920 × 520	368	267	598	131204
SR 20105-EI 45	2050 × 1070 × 500	1900 × 920 × 420	251	245	598	131205
▶ SR 20104-EI 45	2050 × 1070 × 400	1900 × 920 × 320	229	225	598	131206
SR 2086-EI 45	2050 × 870 × 600	1900 × 720 × 520	243	205	455	131207
SR 2085-EI 45	2050 × 870 × 500	1900 × 720 × 420	219	189	455	131208
▶ SR 2084-EI 45	2050 × 870 × 400	1900 × 720 × 320	204	165	455	131209
SR 2083-EI 45	2050 × 870 × 300	1900 × 720 × 220	188	151	455	131210
SR 2066-EI 45	2050 × 670 × 600	1900 × 520 × 520	198	160	312	131211
SR 2065-EI 45	2050 × 670 × 500	1900 × 520 × 420	183	141	312	131212
SR 2064-EI 45	2050 × 670 × 400	1900 × 520 × 320	169	124	312	131213
SR 2063-EI 45	2050 × 670 × 300	1900 × 520 × 220	153	111	312	131214
SR 17125-EI 45	1750 × 1270 × 500	1600 × 1120 × 420	221	186	627	131215
SR 17124-EI 45	1750 × 1270 × 400	1600 × 1120 × 320	210	174	627	131216
SR 17105-EI 45	1750 × 1070 × 500	1600 × 920 × 420	197	182	506	131217
SR 17104-EI 45	1750 × 1070 × 400	1600 × 920 × 320	186	171	506	131218
SR 1785-EI 45	1750 × 870 × 500	1600 × 720 × 420	189	153	385	131219
SR 1784-EI 45	1750 × 870 × 400	1600 × 720 × 320	179	140	385	131220
▶ SR 1765-EI 45	1750 × 670 × 500	1600 × 520 × 420	150	119	264	131221
SR 1764-EI 45	1750 × 670 × 400	1600 × 520 × 320	142	106	264	131222
SR 15124-EI 45	1550 × 1270 × 300	1400 × 1120 × 320	179	148	513	131223
SR 15104-EI 45	1550 × 1070 × 400	1400 × 920 × 320	171	146	414	131224
SR 1584-EI 45	1550 × 870 × 400	1400 × 720 × 320	137	120	315	131225
SR 1564-EI 45	1550 × 670 × 400	1400 × 520 × 320	128	94	216	131226

* Box height + 50 mm base ** Approximate figures *** Approximate figures, without ventilation
Atypical dimensions can be supplied on request.

▶ The item is usually in stock.

Free-standing EI-rated SR boxes

SR - EI 60 DP1-S _a /S ₂₀₀ - free-standing box IP 54						
Type name	Outside dimensions [mm] height* × width × depth	Inside dimensions [mm] height × width × depth	Weight ** [kg]	PV *** [W]	Number of modules capacity	Product code
SR 20126-EI 60	2050 × 1270 × 600	1900 × 1120 × 520	307	220	741	131301
SR 20125-EI 60	2050 × 1270 × 500	1900 × 1120 × 420	285	201	741	131302
SR 20124-EI 60	2050 × 1270 × 400	1900 × 1120 × 320	262	181	741	131303
SR 20106-EI 60	2050 × 1070 × 600	1900 × 920 × 520	379	235	598	131304
SR 20105-EI 60	2050 × 1070 × 500	1900 × 920 × 420	262	215	598	131305
▶ SR 20104-EI 60	2050 × 1070 × 400	1900 × 920 × 320	240	198	598	131306
SR 2086-EI 60	2050 × 870 × 600	1900 × 720 × 520	254	180	455	131307
SR 2085-EI 60	2050 × 870 × 500	1900 × 720 × 420	230	166	455	131308
▶ SR 2084-EI 60	2050 × 870 × 400	1900 × 720 × 320	215	145	455	131309
SR 2083-EI 60	2050 × 870 × 300	1900 × 720 × 220	199	133	455	131310
SR 2066-EI 60	2050 × 670 × 600	1900 × 520 × 520	209	141	312	131311
SR 2065-EI 60	2050 × 670 × 500	1900 × 520 × 420	194	125	312	131312
SR 2064-EI 60	2050 × 670 × 400	1900 × 520 × 320	180	109	312	131313
SR 2063-EI 60	2050 × 670 × 300	1900 × 520 × 220	164	98	312	131314
SR 17125-EI 60	1750 × 1270 × 500	1600 × 1120 × 420	232	164	627	131315
SR 17124-EI 60	1750 × 1270 × 400	1600 × 1120 × 320	221	154	627	131316
SR 17105-EI 60	1750 × 1070 × 500	1600 × 920 × 420	208	161	506	131317
SR 17104-EI 60	1750 × 1070 × 400	1600 × 920 × 320	197	151	506	131318
SR 1785-EI 60	1750 × 870 × 500	1600 × 720 × 420	200	135	385	131319
SR 1784-EI 60	1750 × 870 × 400	1600 × 720 × 320	190	124	385	131320
▶ SR 1765-EI 60	1750 × 670 × 500	1600 × 520 × 420	161	105	264	131321
SR 1764-EI 60	1750 × 670 × 400	1600 × 520 × 320	153	94	264	131322
SR 15124-EI 60	1550 × 1270 × 300	1400 × 1120 × 320	190	131	513	131323
SR 15104-EI 60	1550 × 1070 × 400	1400 × 920 × 320	182	129	414	131324
SR 1584-EI 60	1550 × 870 × 400	1400 × 720 × 320	148	105	315	131325
SR 1564-EI 60	1550 × 670 × 400	1400 × 520 × 320	139	83	216	131326

* Box height + 50 mm base ** Approximate figures *** Approximate figures, without ventilation
Atypical dimensions can be supplied on request.

▶ The item is usually in stock.

Free-standing EI-rated SR boxes

SR - EI 90 DP1-S _a /S ₂₀₀ – free-standing box IP 54						
Type name	Outside dimensions [mm] height* × width × depth	Inside dimensions [mm] height × width × depth	Weight ** [kg]	PV *** [W]	Number of modules capacity	Product code
SR 20126-EI 90	2050 × 1270 × 600	1900 × 1120 × 520	316	169	741	131401
SR 20125-EI 90	2050 × 1270 × 500	1900 × 1120 × 420	294	155	741	131402
SR 20124-EI 90	2050 × 1270 × 400	1900 × 1120 × 320	270	139	741	131403
SR 20106-EI 90	2050 × 1070 × 600	1900 × 920 × 520	390	181	598	131404
SR 20105-EI 90	2050 × 1070 × 500	1900 × 920 × 420	270	166	598	131405
SR 20104-EI 90	2050 × 1070 × 400	1900 × 920 × 320	247	152	598	131406
SR 2086-EI 90	2050 × 870 × 600	1900 × 720 × 520	262	139	455	131407
SR 2085-EI 90	2050 × 870 × 500	1900 × 720 × 420	237	128	455	131408
SR 2084-EI 90	2050 × 870 × 400	1900 × 720 × 320	221	112	455	131409
SR 2066-EI 90	2050 × 670 × 600	1900 × 520 × 520	215	109	312	131410
SR 2065-EI 90	2050 × 670 × 500	1900 × 520 × 420	200	96	312	131411
SR 2064-EI 90	2050 × 670 × 400	1900 × 520 × 320	185	84	312	131412
SR 17125-EI 90	1750 × 1270 × 500	1600 × 1120 × 420	239	127	627	131413
SR 17124-EI 90	1750 × 1270 × 400	1600 × 1120 × 320	228	119	627	131414
SR 17105-EI 90	1750 × 1070 × 500	1600 × 920 × 420	214	124	506	131415
SR 17104-EI 90	1750 × 1070 × 400	1600 × 920 × 320	203	116	506	131416
SR 1785-EI 90	1750 × 870 × 500	1600 × 720 × 420	206	104	385	131417
SR 1784-EI 90	1750 × 870 × 400	1600 × 720 × 320	196	95	385	131418
SR 1765-EI 90	1750 × 670 × 500	1600 × 520 × 420	166	81	264	131419
SR 1764-EI 90	1750 × 670 × 400	1600 × 520 × 320	158	72	264	131420
SR 15124-EI 90	1550 × 1270 × 300	1400 × 1120 × 320	196	101	513	131421
SR 15104-EI 90	1550 × 1070 × 400	1400 × 920 × 320	187	99	414	131422
SR 1584-EI 90	1550 × 870 × 400	1400 × 720 × 320	152	81	315	131423
SR 1564-EI 90	1550 × 670 × 400	1400 × 520 × 320	143	64	216	131424

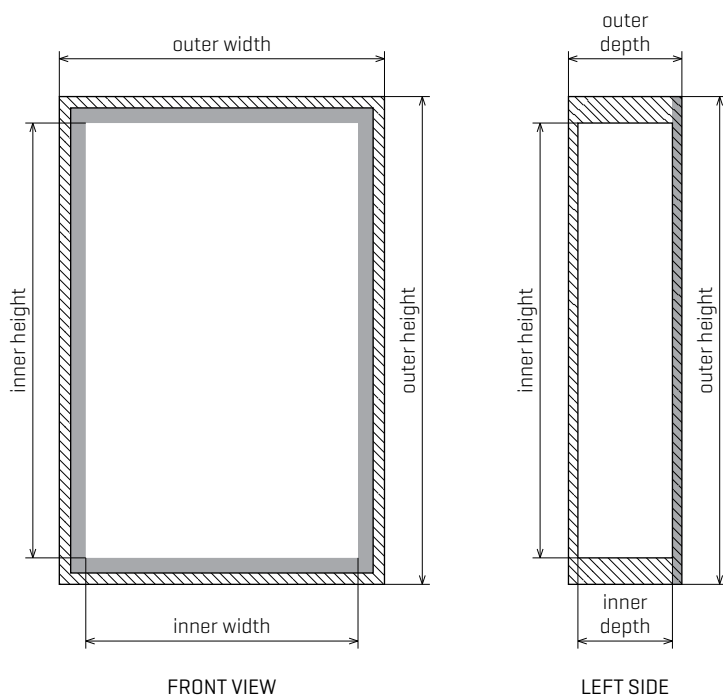
* Box height + 50 mm base ** Approximate figures *** Approximate figures, without ventilation
Atypical dimensions can be supplied on request.

Free-standing EI-rated SR boxes

Accessories for free-standing boxes				
Type name	Product code			
	Instrument grid	Cover plates	Electricity metre installation elements	Mounting plate
SR 20126-EI (30/45/60/90)	141101	146501	142101	143101
SR 20125-EI (30/45/60/90)	141102	146502	142102	143102
SR 20124-E (30/45/60/90)	141103	146503	142103	143103
SR 20106-EI (30/45/60/90)	141104	146504	142104	143104
SR 20105-EI (30/45/60/90)	141105	146505	142105	143105
SR 20104-EI (30/45/60/90)	141106	146506	142106	143106
SR 2086-EI (30/45/60/90)	141107	146507	142107	143107
SR 2085-EI (30/45/60/90)	141108	146508	142108	143108
SR 2084-EI (30/45/60/90)	141109	146509	142109	143109
SR 2083-EI (30/45/60/90)	141110	146510	142110	143110
SR 2066-EI (30/45/60/90)	141111	146511	142111	143111
SR 2065-EI (30/45/60/90)	141112	146512	142112	143112
SR 2064-EI (30/45/60/90)	141113	146513	142113	143113
SR 2063-EI (30/45/60/90)	141114	146514	142114	143114
SR 17125-EI (30/45/60/90)	141115	146515	142115	143115
SR 17124-EI (30/45/60/90)	141116	146516	142116	143116
SR 17105-EI (30/45/60/90)	141117	146517	142117	143117
SR 17104-EI (30/45/60/90)	141118	146518	142118	143118
SR 1785-EI (30/45/60/90)	141119	146519	142119	143119
SR 1784-EI (30/45/60/90)	141120	146520	142120	143120
SR 1765-EI (30/45/60/90)	141121	146521	142121	143121
SR 1764-EI (30/45/60/90)	141122	146522	142122	143122
SR 15124-EI (30/45/60/90)	141123	146523	142123	143123
SR 15104-EI (30/45/60/90)	141124	146524	142124	143124
SR 1584-EI (30/45/60/90)	141125	146525	142125	143125
SR 1564-EI (30/45/60/90)	141126	146526	142126	143126

Surface-mounted EI-rated SP boxes

- ▶ Fire resistance: EI 30, EI 45 a EI 60 a EI 90
- ▶ Smoke-tight design: S_a/S_{200}
- ▶ Structure: DP1, integrity: A1
- ▶ Ingress protection rating: IP 54
- ▶ The boxes can be fitted with a ventilation system
- ▶ Certified UKM and TKM cable sleeves
- ▶ Tested in compliance with ČSN EN 1634-1, ČSN EN 1634-3
- ▶ Surface finish: powder coating, usually RAL 7035 Light Grey, different shades available on request
- ▶ The boxes can be fitted with an instrument grid, electricity meter case or mounting plate
- ▶ Atypical dimensions can be supplied after consultation.



Electricity metre case

Accessories

The following accessories are available for surface-mounted boxes:

- ▶ Instrument grid + cover plates with or without cut-out
- ▶ Mounting plate
- ▶ Electricity metre installation elements [electricity metre case, electricity metre plate, DIN rails with cover plate or without cut-out]
- ▶ Ventilation system



Cover plate with or without cut-out



Mounting plate



Electricity metre plate



Instrument grid

Surface-mounted EI-rated SP boxes

SP - EI 30 DP1-S _a /S ₂₀₀ - surface-mounted boxes IP 54						
Type name	Outside dimensions [mm] height × width × depth	Inside dimensions [mm] height × width × depth	Weight* [kg]	PV** [W]	Number of modules capacity	Product code
SP 20104-EI 30	2090 × 1060 × 400	1950 × 920 × 320	230	206	598	132101
SP 20103-EI 30	2090 × 1060 × 300	1950 × 920 × 220	203	182	598	132102
SP 2084-EI 30	2090 × 860 × 400	1950 × 720 × 320	200	167	455	132103
SP 2083-EI 30	2090 × 860 × 300	1950 × 720 × 220	183	158	455	132104
SP 2064-EI 30	2090 × 660 × 400	1950 × 520 × 320	175	124	312	132105
SP 2063-EI 30	2090 × 660 × 300	1950 × 520 × 220	164	110	312	132106
SP 17104-EI 30	1790 × 1060 × 400	1650 × 920 × 320	203	154	506	132107
SP 1784-EI 30	1790 × 860 × 400	1650 × 720 × 320	182	125	385	132108
SP 1783-EI 30	1790 × 860 × 300	1650 × 720 × 220	153	116	385	132109
SP 1763-EI 30	1790 × 660 × 300	1650 × 520 × 220	139	88	264	132110
SP 15104-EI 30	1590 × 1060 × 400	1450 × 920 × 320	185	136	414	132111
SP 1584-EI 30	1590 × 860 × 400	1450 × 720 × 320	167	109	315	132112
SP 1583-EI 30	1590 × 860 × 300	1450 × 720 × 220	144	101	315	132113
▶ SP 1563-EI 30	1590 × 660 × 300	1450 × 520 × 220	130	77	216	132114
SP 1284-EI 30	1290 × 860 × 400	1150 × 720 × 320	144	98	245	132116
SP 1283-EI 30	1290 × 860 × 300	1150 × 720 × 220	125	91	245	132117
SP 1263-EI 30	1290 × 660 × 300	1150 × 520 × 220	116	68	168	132118
SP 1084-EI 30	1090 × 860 × 400	950 × 720 × 320	126	80	210	132120
SP 1083-EI 30	1090 × 860 × 300	950 × 720 × 220	109	72	210	132121
▶ SP 1063-EI 30	1090 × 660 × 300	950 × 520 × 220	97	65	144	132122
SP 0784-EI 30	790 × 860 × 400	650 × 720 × 320	97	69	140	132123
▶ SP 0763-EI 30	790 × 660 × 300	650 × 520 × 220	73	59	96	132124
SP 0743-EI 30	790 × 460 × 300	650 × 320 × 220	57	40	52	132125
SP 0443-EI 30	490 × 460 × 300	350 × 320 × 220	38	35	26	132126

* Approximate figures ** Approximate figures: for units hung on the wall, without ventilation
Atypical dimensions can be supplied on request.

▶ The item is usually in stock.

Surface-mounted EI-rated SP boxes

SP - EI 45 DP1-S ₀ /S ₂₀₀ – surface-mounted boxes IP 54						
Type name	Outside dimensions [mm] height × width × depth	Inside dimensions [mm] height × width × depth	Weight* [kg]	PV** [W]	Number of modules capacity	Product code
SP 20104-EI 45	2090 × 1060 × 400	1950 × 920 × 320	237	182	598	132201
SP 20103-EI 45	2090 × 1060 × 300	1950 × 920 × 220	209	161	598	132202
SP 2084-EI 45	2090 × 860 × 400	1950 × 720 × 320	206	148	455	132203
SP 2083-EI 45	2090 × 860 × 300	1950 × 720 × 220	188	140	455	132204
SP 2064-EI 45	2090 × 660 × 400	1950 × 520 × 320	180	110	312	132205
SP 2063-EI 45	2090 × 660 × 300	1950 × 520 × 220	169	98	312	132206
SP 17104-EI 45	1790 × 1060 × 400	1650 × 920 × 320	209	137	506	132207
SP 1784-EI 45	1790 × 860 × 400	1650 × 720 × 320	187	111	385	132208
SP 1783-EI 45	1790 × 860 × 300	1650 × 720 × 220	158	103	385	132209
SP 1763-EI 45	1790 × 660 × 300	1650 × 520 × 220	143	78	264	132210
SP 15104-EI 45	1590 × 1060 × 400	1450 × 920 × 320	191	120	414	132211
SP 1584-EI 45	1590 × 860 × 400	1450 × 720 × 320	172	97	315	132212
SP 1583-EI 45	1590 × 860 × 300	1450 × 720 × 220	148	90	315	132213
▶ SP 1563-EI 45	1590 × 660 × 300	1450 × 520 × 220	134	69	216	132214
SP 1284-EI 45	1290 × 860 × 400	1150 × 720 × 320	148	87	245	132216
SP 1283-EI 45	1290 × 860 × 300	1150 × 720 × 220	129	81	245	132217
SP 1263-EI 45	1290 × 660 × 300	1150 × 520 × 220	119	60	168	132218
SP 1084-EI 45	1090 × 860 × 400	950 × 720 × 320	130	71	210	132220
SP 1083-EI 45	1090 × 860 × 300	950 × 720 × 220	112	64	210	132221
▶ SP 1063-EI 45	1090 × 660 × 300	950 × 520 × 220	100	57	144	132222
SP 0784-EI 45	790 × 860 × 400	650 × 720 × 320	100	61	140	132223
▶ SP 0763-EI 45	790 × 660 × 300	650 × 520 × 220	75	53	96	132224
SP 0743-EI 45	790 × 460 × 300	650 × 320 × 220	59	35	52	132225
SP 0443-EI 45	490 × 460 × 300	350 × 320 × 220	39	31	26	132226

* Approximate figures ** Approximate figures: for units hung on the wall, without ventilation

Atypical dimensions can be supplied on request.

▶ The item is usually in stock.



Surface-mounted EI-rated SP boxes

SP - EI 60 DP1-S _a /S ₂₀₀ - surface-mounted boxes IP 54						
Type name	Outside dimensions [mm] height × width × depth	Inside dimensions [mm] height × width × depth	Weight* [kg]	PV** [W]	Number of modules capacity	Product code
SP 20104-EI 60	2090 × 1060 × 400	1950 × 920 × 320	244	121	598	132301
SP 20103-EI 60	2090 × 1060 × 300	1950 × 920 × 220	215	106	598	132302
SP 2084-EI 60	2090 × 860 × 400	1950 × 720 × 320	212	98	455	132303
SP 2083-EI 60	2090 × 860 × 300	1950 × 720 × 220	194	92	455	132304
SP 2064-EI 60	2090 × 660 × 400	1950 × 520 × 320	185	73	312	132305
SP 2063-EI 60	2090 × 660 × 300	1950 × 520 × 220	174	64	312	132306
SP 17104-EI 60	1790 × 1060 × 400	1650 × 920 × 320	215	120	506	132307
SP 1784-EI 60	1790 × 860 × 400	1650 × 720 × 320	193	96	385	132308
SP 1783-EI 60	1790 × 860 × 300	1650 × 720 × 220	163	68	385	132309
SP 1763-EI 60	1790 × 660 × 300	1650 × 520 × 220	147	51	264	132310
SP 15104-EI 60	1590 × 1060 × 400	1450 × 920 × 320	197	105	414	132311
SP 1584-EI 60	1590 × 860 × 400	1450 × 720 × 320	177	83	315	132312
SP 1583-EI 60	1590 × 860 × 300	1450 × 720 × 220	152	59	315	132313
▶ SP 1563-EI 60	1590 × 660 × 300	1450 × 520 × 220	138	45	216	132314
SP 1284-EI 60	1290 × 860 × 400	1150 × 720 × 320	152	75	245	132316
SP 1283-EI 60	1290 × 860 × 300	1150 × 720 × 220	133	53	245	132317
SP 1263-EI 60	1290 × 660 × 300	1150 × 520 × 220	123	40	168	132318
SP 1084-EI 60	1090 × 860 × 400	950 × 720 × 320	134	60	210	132320
SP 1083-EI 60	1090 × 860 × 300	950 × 720 × 220	115	42	210	132321
▶ SP 1063-EI 60	1090 × 660 × 300	950 × 520 × 220	103	38	144	132322
SP 0784-EI 60	790 × 860 × 400	650 × 720 × 320	103	51	140	132323
▶ SP 0763-EI 60	790 × 660 × 300	650 × 520 × 220	77	35	96	132324
SP 0743-EI 60	790 × 460 × 300	650 × 320 × 220	61	23	52	132325
SP 0443-EI 60	490 × 460 × 300	350 × 320 × 220	40	20	26	132326

* Approximate figures ** Approximate figures: for units hung on the wall, without ventilation
Atypical dimensions can be supplied on request.

▶ The item is usually in stock.

Surface-mounted EI-rated SP boxes

SP - EI 90 DP1-S _a /S ₂₀₀ – surface-mounted boxes IP 54						
Type name	Outside dimensions [mm] height × width × depth	Inside dimensions [mm] height × width × depth	Weight* [kg]	PV** [W]	Number of modules capacity	Product code
SP 20104-EI 90	2090 × 1060 × 400	1950 × 920 × 320	251	121	598	132401
SP 20103-EI 90	2090 × 1060 × 300	1950 × 920 × 220	221	106	598	132402
SP 2084-EI 90	2090 × 860 × 400	1950 × 720 × 320	218	98	455	132403
SP 2083-EI 90	2090 × 860 × 300	1950 × 720 × 220	200	92	455	132404
SP 2064-EI 90	2090 × 660 × 400	1950 × 520 × 320	191	73	312	132405
SP 2063-EI 90	2090 × 660 × 300	1950 × 520 × 220	179	64	312	132406
SP 17104-EI 60	1790 × 1060 × 400	1650 × 920 × 320	221	120	506	132407
SP 1784-EI 90	1790 × 860 × 400	1650 × 720 × 320	199	96	385	132408
SP 1783-EI 90	1790 × 860 × 300	1650 × 720 × 220	168	68	385	132409
SP 1763-EI 90	1790 × 660 × 300	1650 × 520 × 220	151	51	264	132410
SP 15104-EI 90	1590 × 1060 × 400	1450 × 920 × 320	203	105	414	132411
SP 1584-EI 90	1590 × 860 × 400	1450 × 720 × 320	182	83	315	132412
SP 1583-EI 90	1590 × 860 × 300	1450 × 720 × 220	157	59	315	132413
▶ SP 1563-EI 90	1590 × 660 × 300	1450 × 520 × 220	142	45	216	132414
SP 1284-EI 90	1290 × 860 × 400	1150 × 720 × 320	157	75	245	132415
SP 1283-EI 90	1290 × 860 × 300	1150 × 720 × 220	137	53	245	132416
SP 1263-EI 90	1290 × 660 × 300	1150 × 520 × 220	127	40	168	132417
SP 1084-EI 90	1090 × 860 × 400	950 × 720 × 320	138	60	210	132418
SP 1083-EI 90	1090 × 860 × 300	950 × 720 × 220	118	42	210	132419
▶ SP 1063-EI 90	1090 × 660 × 300	950 × 520 × 220	106	38	144	132420
SP 0784-EI 90	790 × 860 × 400	650 × 720 × 320	106	51	140	132421
▶ SP 0763-EI 90	790 × 660 × 300	650 × 520 × 220	79	35	96	132422
SP 0743-EI 90	790 × 460 × 300	650 × 320 × 220	63	23	52	132423
SP 0443-EI 90	490 × 460 × 300	350 × 320 × 220	41	20	26	132424

* Approximate figures ** Approximate figures: for units hung on the wall, without ventilation
Atypical dimensions can be supplied on request.

▶ The item is usually in stock.

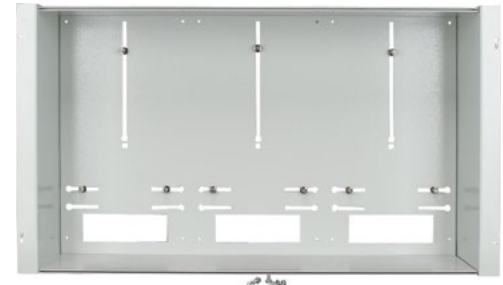
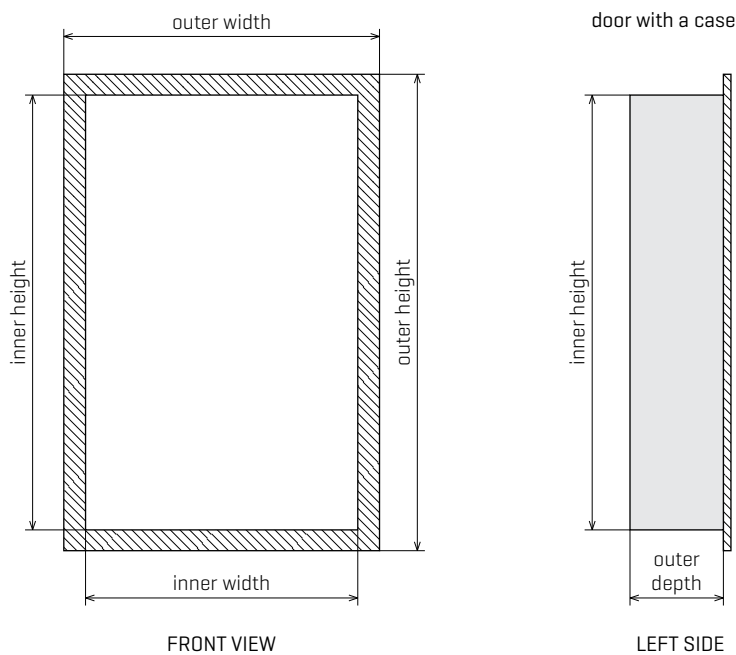


Surface-mounted EI-rated SP boxes

Accessories for surface-mounted boxes				
Type name	Product code			
	Instrument grid	Cover plates	Electricity metre installation elements	Mounting plate
SP 20104-EI (30/45/60/90)	141201	146801	146401	146701
SP 20103-EI (30/45/60/90)	141202	146802	146402	146702
SP 2084-EI (30/45/60/90)	141203	146803	146403	146703
SP 2083-EI (30/45/60/90)	141204	146804	146404	146704
SP 2064-EI (30/45/60/90)	141205	146805	146405	146705
SP 2063-EI (30/45/60/90)	141206	146806	146406	146706
SP 17104-EI (30/45/60/90)	141207	146807	146407	146707
SP 1784-EI (30/45/60/90)	141208	146808	146408	146708
SP 1783-EI (30/45/60/90)	141209	146809	146409	146709
SP 1763-EI (30/45/60/90)	141210	146810	146410	146710
SP 15104-EI (30/45/60/90)	141211	146811	146411	146711
SP 1584-EI (30/45/60/90)	141212	146812	146412	146712
SP 1583-EI (30/45/60/90)	141213	146813	146413	146713
SP 1563-EI (30/45/60/90)	141214	146814	146414	146714
SP 1284-EI (30/45/60/90)	141216	146816	146416	146716
SP 1283-EI (30/45/60/90)	141217	146817	146417	146717
SP 1263-EI (30/45/60/90)	141218	146818	146418	146718
SP 1084-EI (30/45/60/90)	141220	146820	146420	146720
SP 1083-EI (30/45/60/90)	141221	146821	146421	146721
SP 1063-EI (30/45/60/90)	141222	146822	146422	146722
SP 0784-EI (30/45/60/90)	141223	146823	146423	146723
SP 0763-EI (30/45/60/90)	141224	146824	146424	146724
SP 0743-EI (30/45/60/90)	141225	146825	146425	146725
SP 0443-EI (30/45/60/90)	141226	146826	146426	146726

In-wall EI-rated SZ L frame with door

- ▶ Fire resistance: EI 30, EI 45 a EI 60
- ▶ Smoke-tight design: S_a/S_{200}
- ▶ Structure: DP1, integrity: A1
- ▶ Ingress protection rating: IP 54
- ▶ The boxes can be fitted with a ventilation system
- ▶ Tested in compliance with ČSN EN 1634-1, ČSN EN 1634-3
- ▶ Surface finish: powder coating, usually RAL 7035 Light Grey, different shades available on request
- ▶ The boxes can be fitted with an instrument grid, electricity meter case or mounting plate
- ▶ Atypical dimensions can be supplied after consultation.

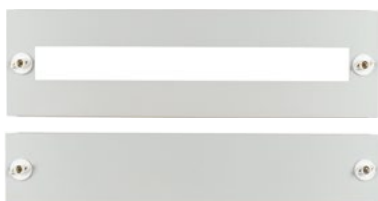


Electricity metre case

Accessories

The following accessories are available for in-wall boxes:

- ▶ Instrument grid + cover plates with or without cut-out
- ▶ Mounting plate
- ▶ Electricity metre installation elements (electricity metre case, electricity metre plate, DIN rails with cover plate or without cut-out]
- ▶ Ventilation system



Cover plate with or without cut-out



Mounting plate



Electricity metre plate



Instrument grid

In-wall EI-rated SZ L frame with door

Installation procedure for SZ L – EI in-wall distribution boxes

The distribution box is anchored and fixed to the wall by bolts and wall plugs through the holes in the side of the frame. While fixing the frames to the wall it is necessary to use a level to make sure the frame is level both horizontally and vertically. It is also necessary to measure and level both frame diagonals, which should be identical (± 1 mm), for correct door closing.

Any interstices between the frame and the wall must be sealed with fireproof material on the rear side of the recess. As a standard, interstices are filled with brick, mortar and adhesive. Alternatively, fire resistant expanding foam can be used. However, it must be in compliance with ČSN EN 13501-1 and its fire resistance must be higher than the fire resistance of the frame and door.

The space for the frame must be filled with brick and mortar sufficiently so that there are no interstices between the frame and the wall and the distributor is properly mechanically fixed.

During installation or handling of EI-rated distributors it is necessary to take into account the higher weight of the frame with the door and the mechanical properties of the insulation material so that the insulation layer of the door lining is not broken. The maximum angle of opening the door (approximately 120 °) must not be exceeded in handling the door so that the hinges are not unacceptably stressed and, as a result, ripped. Before the frame is mounted into the wall, it is recommended that the frames are transported and handled horizontally on a solid surface of suitable dimensions (e.g. a pallet).

The frame can be mounted into the wall without the door. The door can be removed by removing the hinge pins and unscrewing the earthing wire.

In order for the product to retain its properties, defined by the certificate, it is not permitted to remove or adjust the insulation plates, remove door sealing or make any changes to the fireproof part of the distribution box structure.

Summary of the dimensions of the brick-up holes

Type name	Outside dimensions of frame with door [mm] height × width × depth	Brick-up hole [mm]		
		Height	Width	Depth*
SZ L-2012-EI (30/45/60)	2070 × 1245 × 170	2025	1200	200
SZ L-2010-EI (30/45/60)	2070 × 1045 × 170	2025	1000	200
SZ L-2008-EI (30/45/60)	2070 × 845 × 170	2025	800	200
SZ L-2006-EI (30/45/60)	2070 × 645 × 170	2025	600	200
SZ L-1712-EI (30/45/60)	1770 × 1245 × 170	1725	1200	200
SZ L-1710-EI (30/45/60)	1770 × 1045 × 170	1725	1000	200
SZ L-1708-EI (30/45/60)	1770 × 845 × 170	1725	800	200
SZ L-1706-EI (30/45/60)	1770 × 645 × 170	1725	600	200
SZ L-1512-EI (30/45/60)	1570 × 1245 × 170	1525	1200	200
SZ L-1510-EI (30/45/60)	1570 × 1045 × 170	1525	1000	200
SZ L-1508-EI (30/45/60)	1570 × 845 × 170	1525	800	200
SZ L-1506-EI (30/45/60)	1570 × 645 × 170	1525	600	200
SZ L-1208-EI (30/45/60)	1270 × 845 × 170	1225	800	200
SZ L-1206-EI (30/45/60)	1270 × 645 × 170	1225	600	200
SZ L-1008-EI (30/45/60)	1070 × 845 × 170	1025	800	200
SZ L-1006-EI (30/45/60)	1070 × 645 × 170	1025	600	200
SZ L-0706-EI (30/45/60)	770 × 645 × 170	725	600	200
SZ L-0704-EI (30/45/60)	770 × 445 × 170	725	400	200
SZ L-0404-EI (30/45/60)	470 × 445 × 170	425	400	200

* Minimum recommended depth; the necessary depth may differ with regard to distribution box content.

In-wall EI-rated SZ L frame with door

SZ L - EI 30 DP1-S _a /S ₂₀₀ – in-wall frame with door, with its own case, IP 54						
Type name	Outside dimensions [mm] height × width × depth	Inside dimensions [mm] height × width × depth	Weight* [kg]	PV** [W]	Number of modules capacity	Product code
▶ SZ L-2012-EI 30	2060 × 1235 × 200	1950 × 1120	118	135	741	146101
▶ SZ L-2010-EI 30	2060 × 1035 × 200	1950 × 920	105	117	598	146102
▶ SZ L-2008-EI 30	2060 × 835 × 200	1950 × 720	92	82	455	146103
▶ SZ L-2006-EI 30	2060 × 635 × 200	1950 × 520	79	49	312	146104
SZ L-1712-EI 30	1760 × 1235 × 200	1650 × 1120	102	129	627	146105
SZ L-1710-EI 30	1760 × 1035 × 200	1650 × 920	91	100	506	146106
SZ L-1708-EI 30	1760 × 835 × 200	1650 × 720	77	70	385	146107
SZ L-1706-EI 30	1760 × 635 × 200	1650 × 520	65	46	264	146108
SZ L-1512-EI 30	1560 × 1235 × 200	1450 × 1120	89	123	513	146109
SZ L-1510-EI 30	1560 × 1035 × 200	1450 × 920	76	91	414	146110
▶ SZ L-1508-EI 30	1560 × 835 × 200	1450 × 720	63	68	315	146111
▶ SZ L-1506-EI 30	1560 × 635 × 200	1450 × 520	50	41	216	146112
SZ L-1208-EI 30	1260 × 835 × 200	1150 × 720	50	51	245	146114
SZ L-1206-EI 30	1260 × 635 × 200	1150 × 520	40	36	168	146115
SZ L-1008-EI 30	1060 × 835 × 200	950 × 720	42	53	210	146116
▶ SZ L-1006-EI 30	1060 × 635 × 200	950 × 520	34	27	144	146117
SZ L-0706-EI 30	760 × 635 × 200	650 × 520	28	21	96	146118
SZ L-0704-EI 30	760 × 435 × 200	650 × 320	25	20	52	146119
SZ L-0404-EI 30	460 × 435 × 200	350 × 320	22	16	26	146120

* Approximate figures ** Approximate figures, without ventilation
Atypical dimensions can be supplied on request.

▶ The item is usually in stock.

In-wall EI-rated SZ L frame with door

SZ L - EI 45 DP1-S_a/S₂₀₀ - in-wall frame with door, with its own case, IP 54

Type name	Outside dimensions [mm] height × width × depth	Inside dimensions [mm] height × width × depth	Weight* [kg]	PV** [W]	Number of modules capacity	Product code
▶ SZ L-2012-EI 45	2060 × 1235 × 200	1950 × 1120	120	128	741	146201
▶ SZ L-2010-EI 45	2060 × 1035 × 200	1950 × 920	107	111	598	146202
▶ SZ L-2008-EI 45	2060 × 835 × 200	1950 × 720	94	78	455	146203
▶ SZ L-2006-EI 45	2060 × 635 × 200	1950 × 520	81	47	312	146204
SZ L-1712-EI 45	1760 × 1235 × 200	1650 × 1120	104	122	627	146205
SZ L-1710-EI 45	1760 × 1035 × 200	1650 × 920	93	95	506	146206
SZ L-1708-EI 45	1760 × 835 × 200	1650 × 720	79	67	385	146207
SZ L-1706-EI 45	1760 × 635 × 200	1650 × 520	67	44	264	146208
SZ L-1512-EI 45	1560 × 1235 × 200	1450 × 1120	91	117	513	146209
SZ L-1510-EI 45	1560 × 1035 × 200	1450 × 920	78	86	414	146210
▶ SZ L-1508-EI 45	1560 × 835 × 200	1450 × 720	65	64	315	146211
▶ SZ L-1506-EI 45	1560 × 635 × 200	1450 × 520	52	39	216	146212
SZ L-1208-EI 45	1260 × 835 × 200	1150 × 720	52	48	245	146214
SZ L-1206-EI 45	1260 × 635 × 200	1150 × 520	42	34	168	146215
SZ L-1008-EI 45	1060 × 835 × 200	950 × 720	44	51	210	146216
▶ SZ L-1006-EI 45	1060 × 635 × 200	950 × 520	36	25	144	146217
SZ L-0706-EI 45	760 × 635 × 200	650 × 520	30	20	96	146218
SZ L-0704-EI 45	760 × 435 × 200	650 × 320	27	19	52	146219
SZ L-0404-EI 45	460 × 435 × 200	350 × 320	24	15	26	146220

* Approximate figures ** Approximate figures, without ventilation
Atypical dimensions can be supplied on request.

▶ The item is usually in stock.



In-wall EI-rated SZ L frame with door

SZ L - EI 60 DP1-S _a /S ₂₀₀ – in-wall frame with door, with its own case, IP 54						
Type name	Outside dimensions [mm] height × width × depth	Inside dimensions [mm] height × width × depth	Weight* [kg]	PV** [W]	Number of modules capacity	Product code
▶ SZ L-2012-EI 60	2060 × 1235 × 200	1950 × 1120	122	123	741	146301
▶ SZ L-2010-EI 60	2060 × 1035 × 200	1950 × 920	109	107	598	146302
▶ SZ L-2008-EI 60	2060 × 835 × 200	1950 × 720	96	75	455	146303
▶ SZ L-2006-EI 60	2060 × 635 × 200	1950 × 520	83	45	312	146304
SZ L-1712-EI 60	1760 × 1235 × 200	1650 × 1120	106	117	627	146305
SZ L-1710-EI 60	1760 × 1035 × 200	1650 × 920	95	91	506	146306
SZ L-1708-EI 60	1760 × 835 × 200	1650 × 720	81	64	385	146307
SZ L-1706-EI 60	1760 × 635 × 200	1650 × 520	69	42	264	146308
SZ L-1512-EI 60	1560 × 1235 × 200	1450 × 1120	93	112	513	146309
SZ L-1510-EI 60	1560 × 1035 × 200	1450 × 920	80	83	414	146310
▶ SZ L-1508-EI 60	1560 × 835 × 200	1450 × 720	67	62	315	146311
▶ SZ L-1506-EI 60	1560 × 635 × 200	1450 × 520	54	38	216	146312
SZ L-1208-EI 60	1260 × 835 × 200	1150 × 720	54	46	245	146314
SZ L-1206-EI 60	1260 × 635 × 200	1150 × 520	44	33	168	146315
SZ L-1008-EI 60	1060 × 835 × 200	950 × 720	46	48	210	146316
▶ SZ L-1006-EI 60	1060 × 635 × 200	950 × 520	38	24	144	146317
SZ L-0706-EI 60	760 × 635 × 200	650 × 520	32	19	96	146318
SZ L-0704-EI 60	760 × 435 × 200	650 × 320	29	18	52	146319
SZ L-0404-EI 60	460 × 435 × 200	350 × 320	26	14	26	146320

* Approximate figures ** Approximate figures, without ventilation
Atypical dimensions can be supplied on request.

▶ The item is usually in stock.



In-wall EI-rated SZ L frame with door

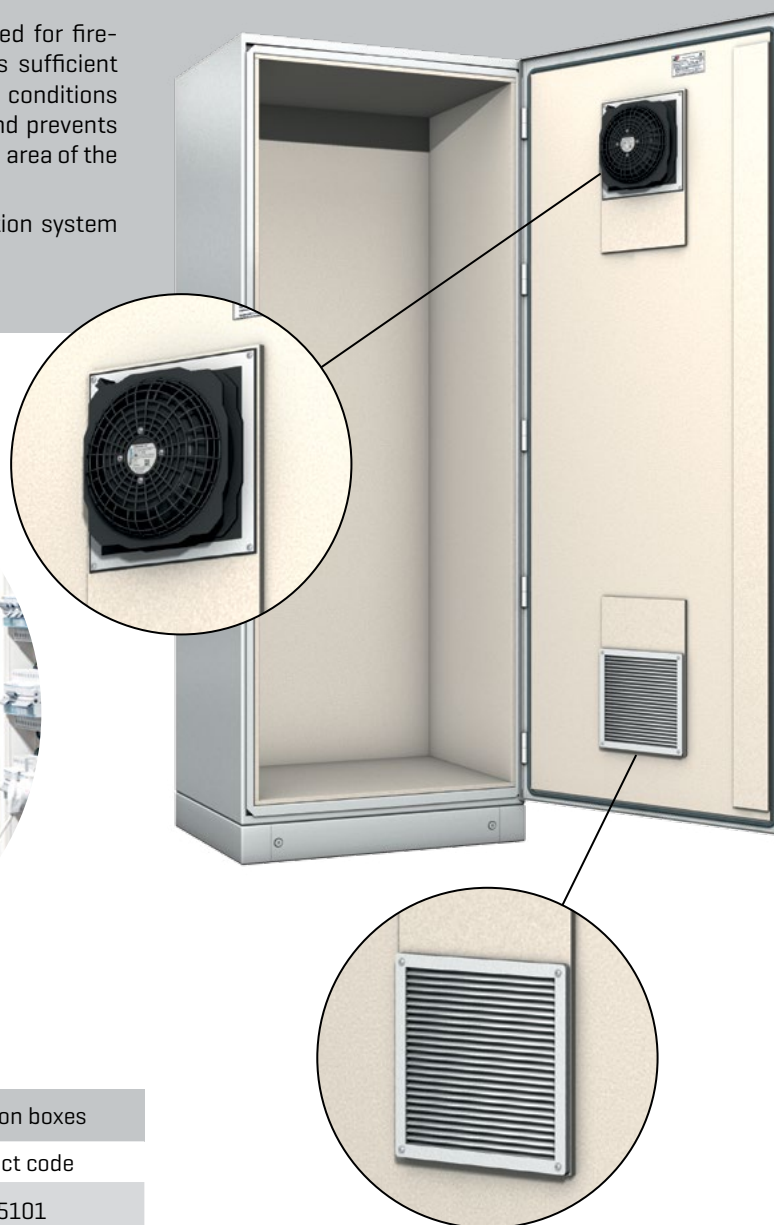
Accessories for SZ L cases – in-wall frame with door, with its own case

Type name	Product code	
	Instrument grid + cover plates	Electricity metre installation elements
SZ L-2012-EI (30/45/60)	147101	147201
SZ L-2010-EI (30/45/60)	147102	147202
SZ L-2008-EI (30/45/60)	147103	147203
SZ L-2006-EI (30/45/60)	147104	147204
SZ L-1712-EI (30/45/60)	147105	147205
SZ L-1710-EI (30/45/60)	147106	147206
SZ L-1708-EI (30/45/60)	147107	147207
SZ L-1706-EI (30/45/60)	147108	147208
SZ L-1512-EI (30/45/60)	147109	147209
SZ L-1510-EI (30/45/60)	147110	147210
SZ L-1508-EI (30/45/60)	147111	147211
SZ L-1506-EI (30/45/60)	147112	147212
SZ L-1208-EI (30/45/60)	147114	147214
SZ L-1206-EI (30/45/60)	147115	147215
SZ L-1008-EI (30/45/60)	147116	147216
SZ L-1006-EI (30/45/60)	147117	147217
SZ L-0706-EI (30/45/60)	147118	147218
SZ L-0704-EI (30/45/60)	147119	147219
SZ L-0404-EI (30/45/60)	147120	147220

Ventilation system for EI-rated boxes

The SKM ventilation system is specially designed for fire-proof box ventilation. The SKM system ensures sufficient ventilation of the inside of the box under normal conditions and it also ensures maximum fire prevention and prevents fire and hot air from spreading into the protected area of the building.

A ventilator can be installed behind the ventilation system for more efficient heat conduction.



SKM ventilation system for EI-rated distribution boxes	
Fire resistance code	Product code
SKM - EI 30	205101
SKM - EI 60	205102
SKM - EI 90	205103

Ventilators				
Name	Power supply	Installation depth [mm]	Heat conduction* [W]	Product code
VT-105	230V [AC]	90	150	205201
VT-230	230V [AC]	107	315	205202
VT-550	230V [AC]	120	800	205203
VT-105-DC	24V [DC]	90	90	205204
VT-230-DC	24V [DC]	107	170	205205

* Approximate figures

Cable sleeves for EI-rated boxes

The cable sleeves are specially designed for this type of fireproof boxes so as to prevent fire and heat from spreading through the sleeve, including heat transfer through the cable as such. The cable sleeves are usually placed on the ceiling or floor of the box.

UKM version

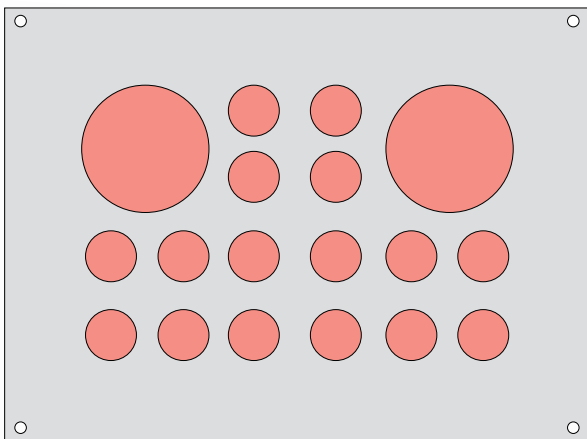
The plug consists of a fireproof fitting. Its main advantage is a very easy and fast cable installation. The cables are inserted into the sleeves, no other putty, coating or sealing materials are needed to seal the sleeve.

- ▶ Sleeves can be installed in box ceiling or bottom.
- ▶ Available versions: UKM-1 and UKM-2
- ▶ Multiple sleeve blocks can be fitted next to each other.
- ▶ Fast pass-through cable installation by inserting them into the sleeve; no other sealing is necessary.

Two versions available

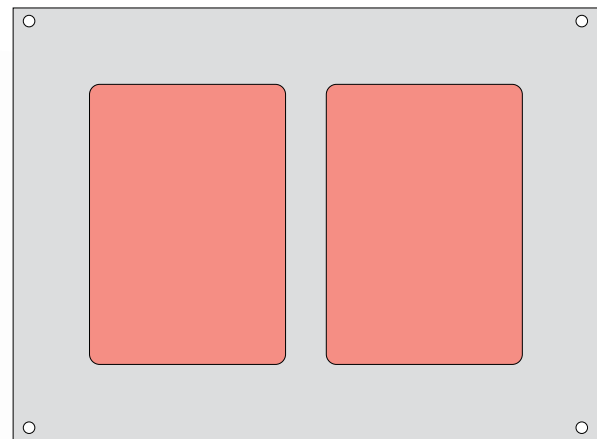
UKM-1

- ▶ 2 holes \varnothing 50 mm, 16 holes \varnothing 22 mm



UKM-2

- ▶ 2 holes [77 × 110 mm]



UKM cable sleeves – product codes

UKM-1	147301
UKM-2	147302



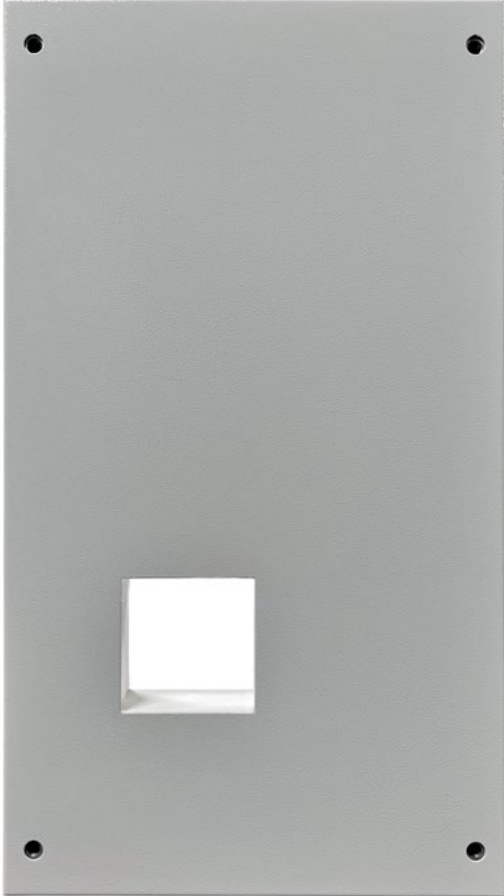
Cable sleeves for EI-rated boxes

TKM version

Flexible version of the cable sleeve. The cables are run through a prepared small tunnel on the building site and then the tunnel hole is sealed with fireproof packing consisting of wool and fireproof putty. It must be sealed by a qualified person.

- ▶ Perfect solution for sleeves with a larger number of cables.
- ▶ Sleeves can be installed in box ceiling or bottom.
- ▶ Multiple dimension versions available
- ▶ Multiple small tunnels can be fitted next to each other.
- ▶ The tunnels are only sealed after the final installation on the building site.
- ▶ Flexible cable installation

TKM cable sleeves		
Name	Sleeve hole [mm]	Product code
TKM-1	150 × 80	147401
TKM-2	250 × 80	147402
TKM-3	350 × 80	147403
TKM-4	175 × 115	147404
TKM-5	250 × 120	147405
TKM-6	350 × 120	147406



Notes:



The best impediment to fire



KM FIRE s. r. o.
U Mlýna 1358
504 01 Nový Bydžov
Czech Republic
www.kmfire.cz/en
konfigurator.kmfire.cz

Vojtaš Roman
Company Director
☎ +420 734 853 095
@vojtas@kmfire.cz

Jilemnický Václav
Sales Department
☎ +420 606 680 506
@jilemnicky@kmfire.cz

Udržal Jan
Production Manager
☎ +420 730 890 654
@vyroba@kmfire.cz

Kuncová Edita
Invoicing
☎ +420 728 874 985
@kuncova@kmfire.cz